

# South Gloucestershire Landscape Character Assessment

## Annex II: Strategic Viewpoints

### South Gloucestershire Council

**Final Draft Report for Adoption Chapter 31**

Prepared by LUC

September 2024



Version	Status	Prepared	Checked	Approved	Date
1	Draft Method and Pilot	E White L Jewitt	K Davies	K Davies	03.04.2023
2	Draft Report	L Jewitt V Kakar	E White	K Davies	16.05.2023
3	Draft Report	E White L Jewitt	E White	K Davies	14.07.2023
4	Final Draft	E White L Jewitt	E White	K Davies	01.11.2023
5	Final Draft (updated following New Local Plan Phase 3 consultation)	L Jewitt	E White	K Davies	12.06.2024
6	Final Draft Report for Adoption	L Jewitt	E White	K Davies	11.09.2024



**Land Use Consultants Limited**

Registered in England. Registered number 2549296. Registered office: 250 Waterloo Road, London SE1 8RD. Printed on 100% recycled paper

# Contents

<b>Chapter 31</b>	<b>232</b>
Strategic Viewpoint 28: Severn View Viewpoint	
Characteristics	238
Summary	239

# Chapter 31

## Strategic Viewpoint 28: Severn View Viewpoint

Figure 31.1: Location of Strategic Viewpoint 28 and landscape character context

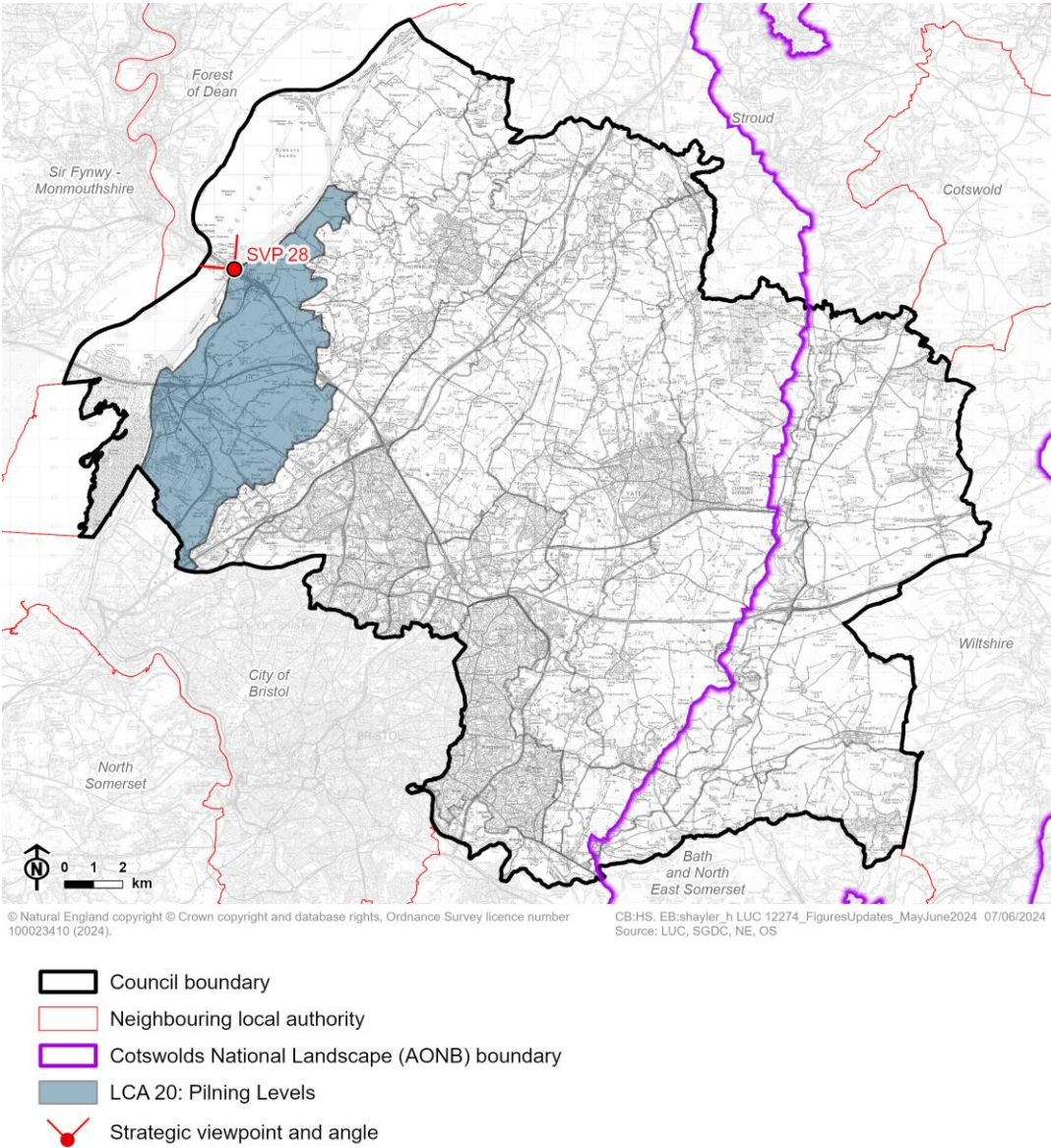
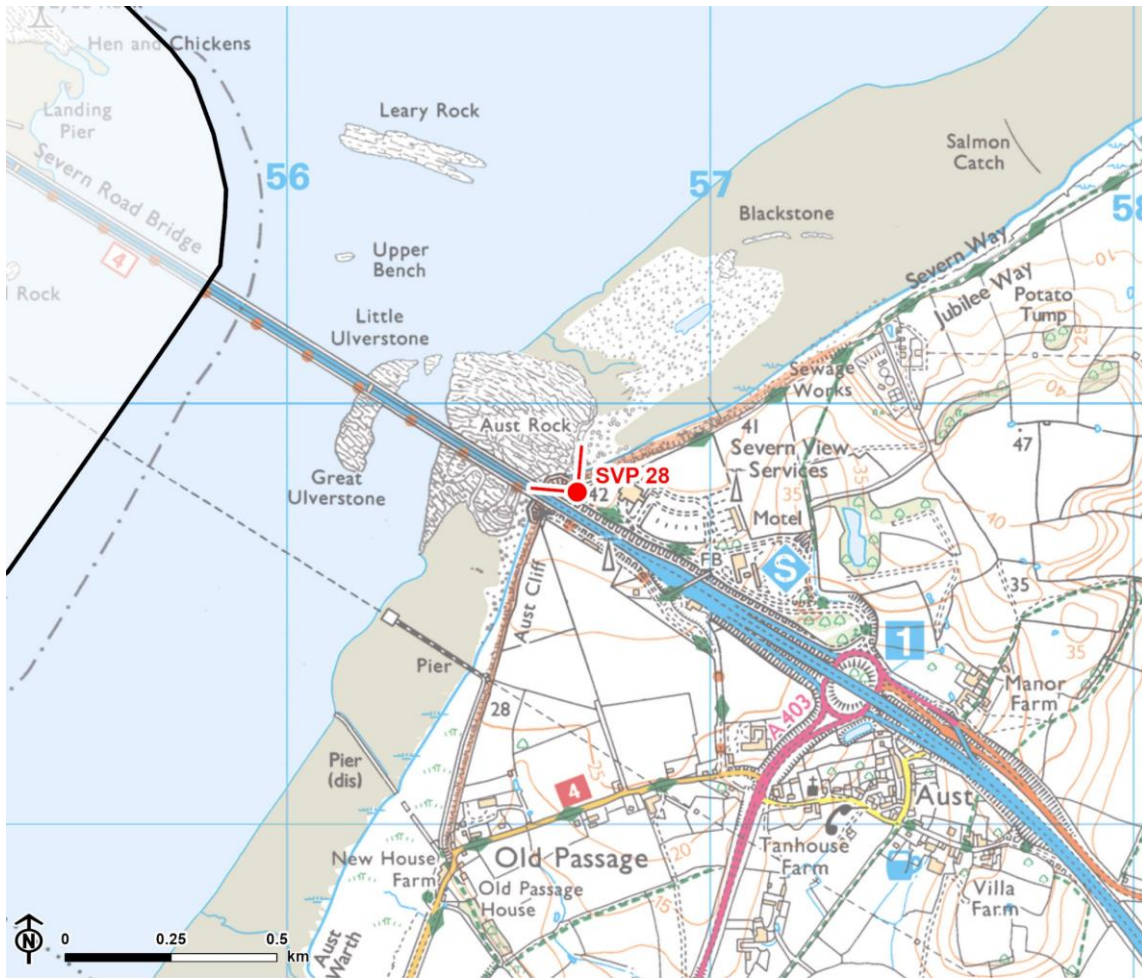





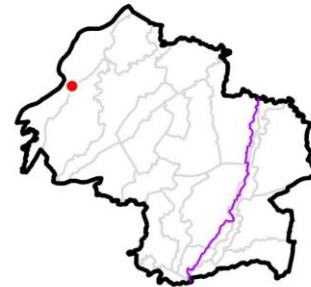


Figure 31.2: Detailed map of the location of Strategic Viewpoint 28



© Natural England. © Historic England. Contains Ordnance Survey data © Crown copyright and database rights, Ordnance Survey licence number 100023410, 2024.

-  Council boundary
-  Cotswolds National Landscape (AONB) boundary
-  Strategic viewpoint and angle



## Viewpoint Information

**Grid reference:** ST 56684 89810

**View location:** Severn Bridge Viewpoint, west of Severn View Service Station, Aust.

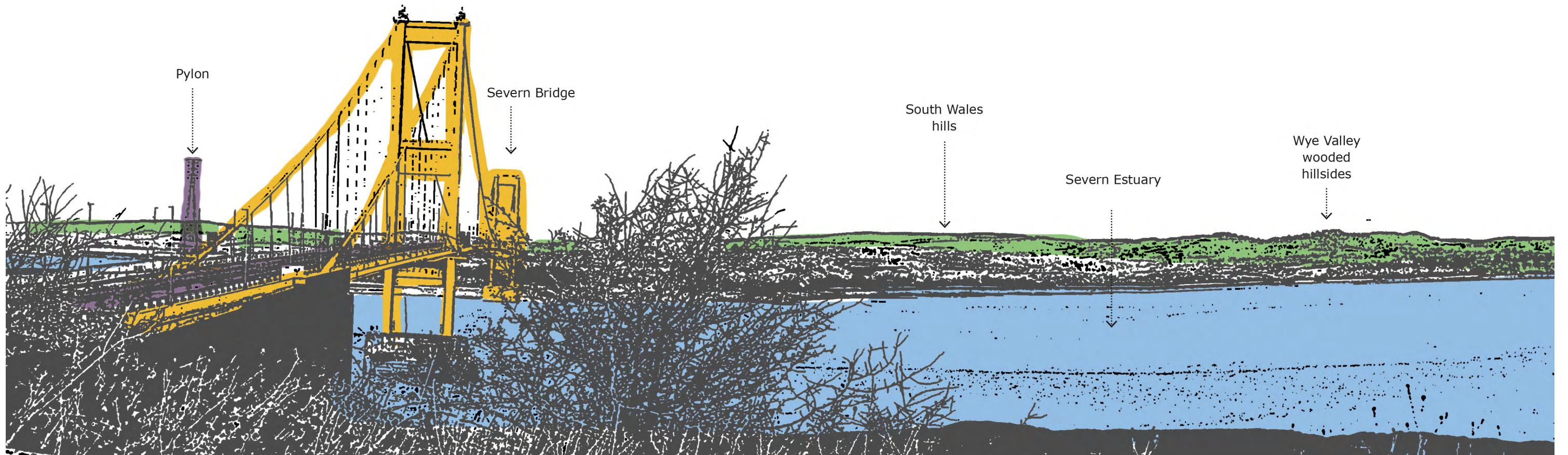
**View direction:** Views north, south and west across LCA 21: Shoreline, Levels and Estuary.

**Relationship with Visually Important Hillside (VIH):** The viewpoint is located on Aust Cliff, an outlier of the Severn Ridges VIH.

**Experienced by:** Recreational users of The Severn Way long distance footpath, the Jubilee Way locally promoted route and visitors to the Severn Bridge viewpoint.



Figure 31.3: View Composition of Strategic Viewpoint 28



 Key landscape feature

 Landmark / historic feature

 Detractive feature



Figure 31.4: Full Panoramic Photograph of Strategic Viewpoint 28



Strategic Viewpoint 28: Severn View Viewpoint



Strategic Viewpoint 28 (continued)





Strategic Viewpoint 28 (continued)



## Characteristics

### Popularity, access and facilities

- The viewpoint location is marked on Google Maps as the 'Severn Bridge Viewpoint' and is likely to attract many visitors as a result.
- The viewpoint location is noted in the SGC Landscape Character Assessment SPD LCA 20: Pilning Levels description which identifies the "*panoramic views across the adjacent landscape and estuary, including to the Severn Bridges*" afforded from The Severn Way footpath.
- The viewpoint is publicly accessible via The Severn Way long distance footpath and Jubilee Way locally promoted route.
- A bench, litter bins and two-coin-operated telescopes are provided to facilitate enjoyment of the view, and a stone marker commemorating the opening of the Severn Bridge is present at the viewpoint.

### Quality, value and features of the view

- The viewpoint provides open and expansive panoramic (180°) views across the Severn Estuary and partly across Aust Rock (characterised by the open and exposed landscape of the estuary and intertidal zone of bed rock, shingle, rivuletted mudflats). The view extends to the wooded hills of the Wye Valley National Landscape, and South Wales forming a prominent backdrop in views and a distinctive skyline in views west.
- The Severn Bridge (Grade I listed) is a dominant landmark feature in views, located immediately adjacent to the west. The Prince of Wales bridge can also be seen in views to the south-west, located 5.2km away.
- Oldbury Power Station also forms a landmark feature (6km away) seen in long-distance views to the north.
- Two large pylons slightly detract from the overall composition of the view, as does more distant views of industrial activity and wind turbines at Avonmouth to the south.



## Summary

The Severn View viewpoint is categorised as a SVP as it meets most of the criteria to some extent. It is a popular, well-known and recorded viewpoint and likely to attract many visitors; it is noted in the South Gloucestershire Landscape Character Assessment as being a natural observation point from which to appreciate the landscape; it is located on a promoted footpath with a bench, litter bins and telescopes facilitating enjoyment of the view; and it provides a panoramic view and takes in the notable landscape features of the Severn Estuary and the hills of the Wye Valley and South Wales, and the landmark features of the Severn Bridge, Prince of Wales Bridge and Oldbury Power Station.



Report produced by LUC

# Report produced by LUC

## **Bristol**

12th Floor, Colston Tower, Colston Street, Bristol BS1 4XE

0117 929 1997

bristol@landuse.co.uk

## **Cardiff**

16A, 15th Floor, Brunel House, 2 Fitzalan Rd, Cardiff CF24 0EB

0292 032 9006

cardiff@landuse.co.uk

## **Edinburgh**

Atholl Exchange, 6 Canning Street, Edinburgh EH3 8EG

0131 202 1616

edinburgh@landuse.co.uk

## **Glasgow**

37 Otago Street, Glasgow G12 8JJ

0141 334 9595

glasgow@landuse.co.uk

## **London**

250 Waterloo Road, London SE1 8RD

020 7383 5784

london@landuse.co.uk

## **Manchester**

6th Floor, 55 King Street, Manchester M2 4LQ

0161 537 5960

manchester@landuse.co.uk

## **landuse.co.uk**

Landscape Design / Strategic Planning & Assessment

Development Planning / Urban Design & Masterplanning

Environmental Impact Assessment / Landscape Planning & Assessment

Landscape Management / Ecology / Historic Environment / GIS & Visualisation